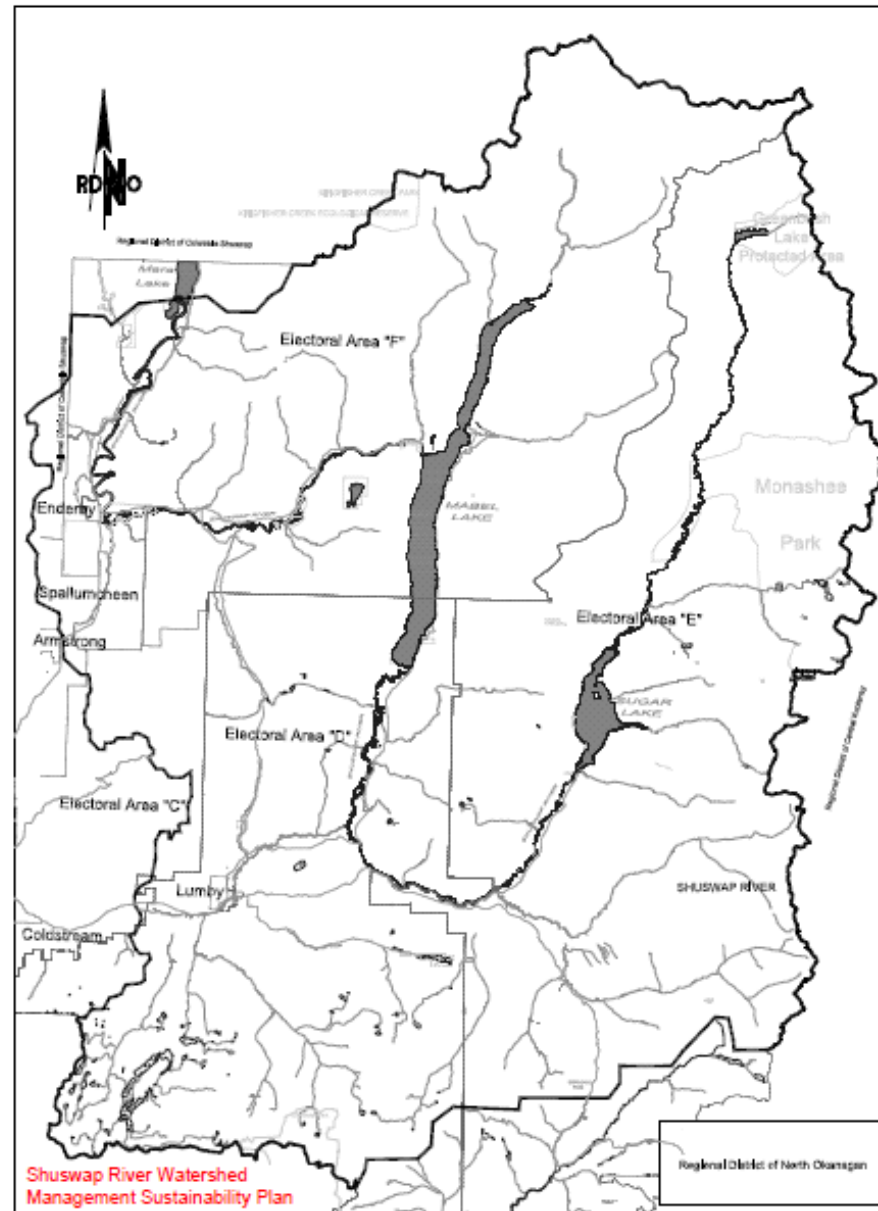




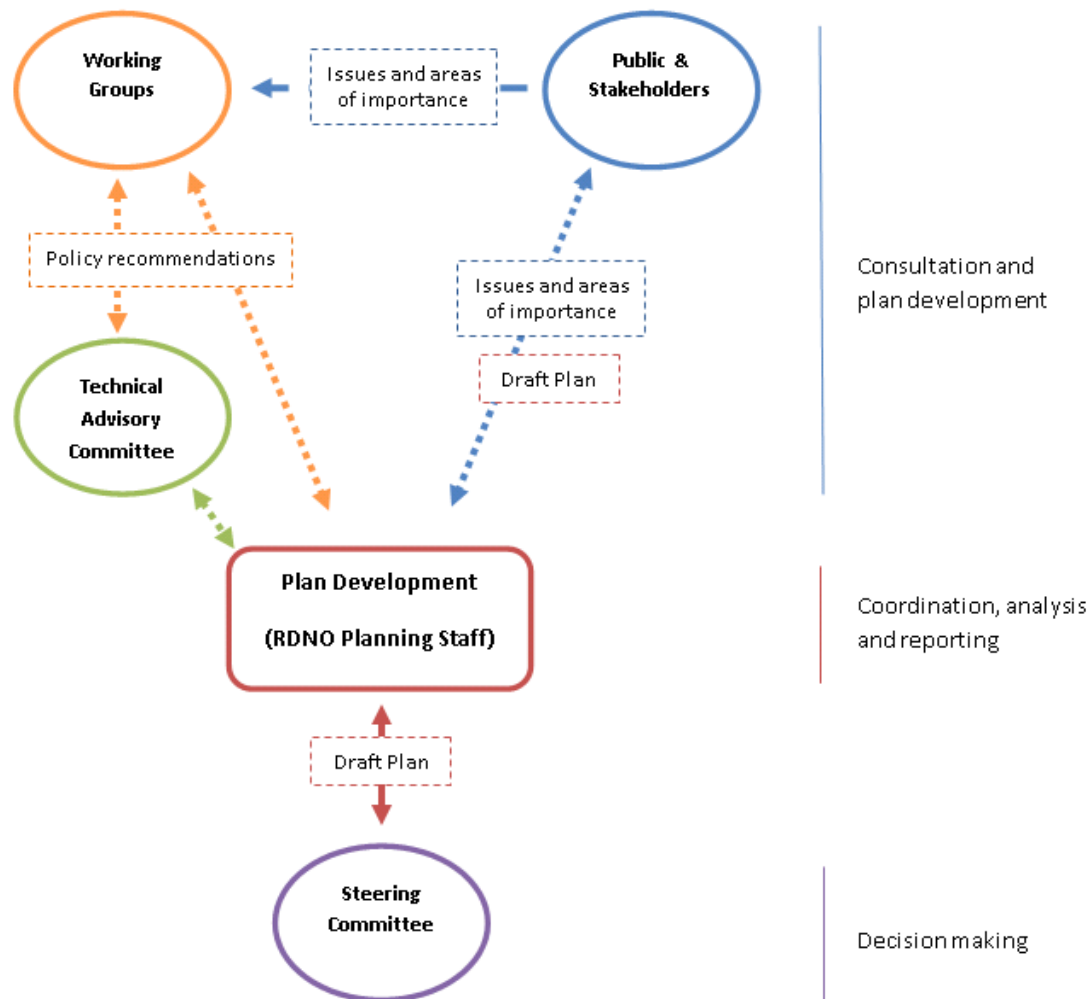
Origins of SRWSP

- Concerns raised by numerous community groups and individuals regarding uses and pressures on the watershed
- Public and Political recognition of the importance of the river and its watershed within the region

Plan Area



Partners



←-----→ Communication and information flow

SRWSP Terms of Reference

Purpose

- Create a common long-term vision for the management of the Shuswap River Watershed that all stakeholders and community members agree to and strive to achieve.
- Create a comprehensive plan that will guide agencies and the community in decision making with regard to land and water planning within the Shuswap River Watershed.

SRWSP – Three Phases

Phase I - Stakeholder & Public Engagement

- Issues Identification and Visioning
- Stakeholder and public workshops
- Technical assessment

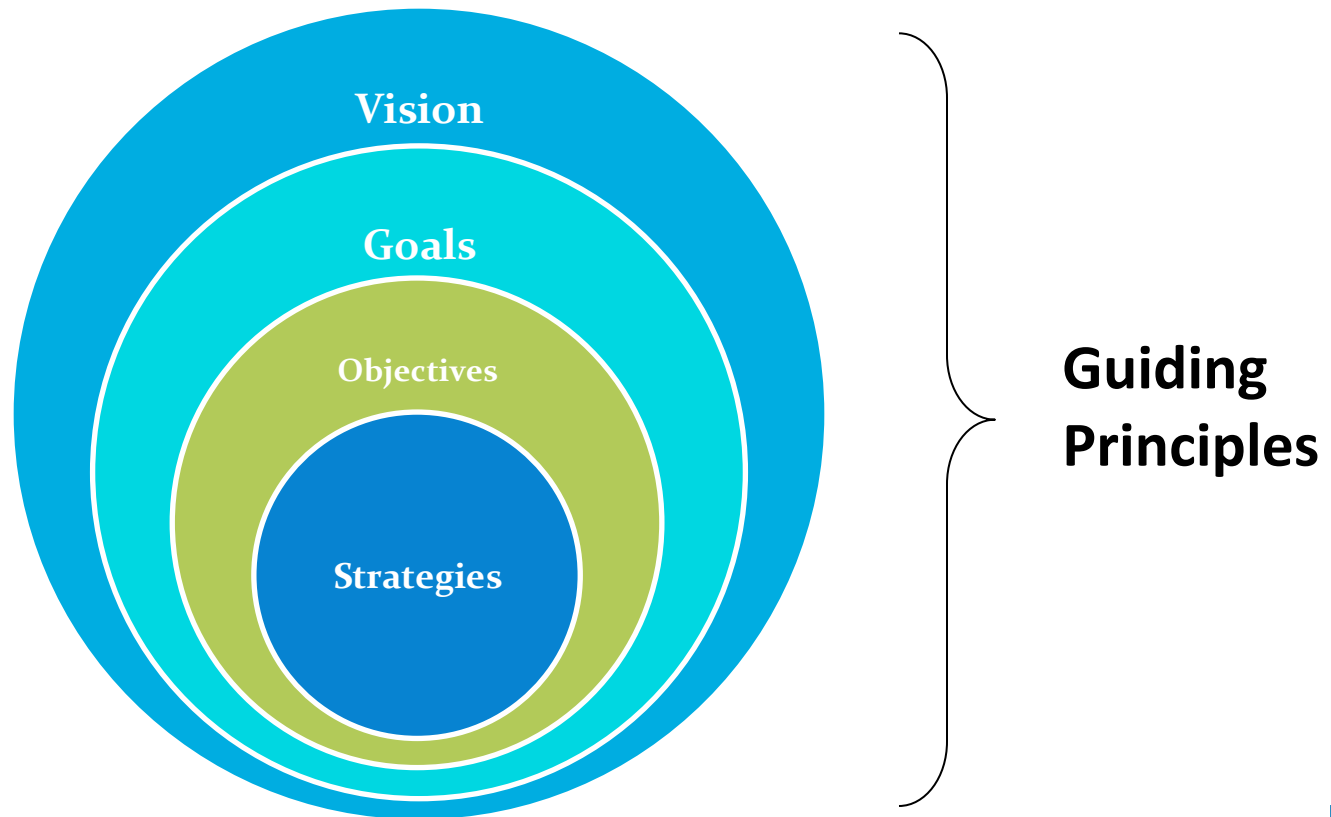
Phase II- Plan Development

- Establishing desired future conditions
- Identify existing, and develop new policies affecting watershed management
- Develop short-term objectives & strategies.
- Develop long-term objectives & strategies.

Phase III- Implementation and Monitoring



SRWSP Planning Framework



To Date

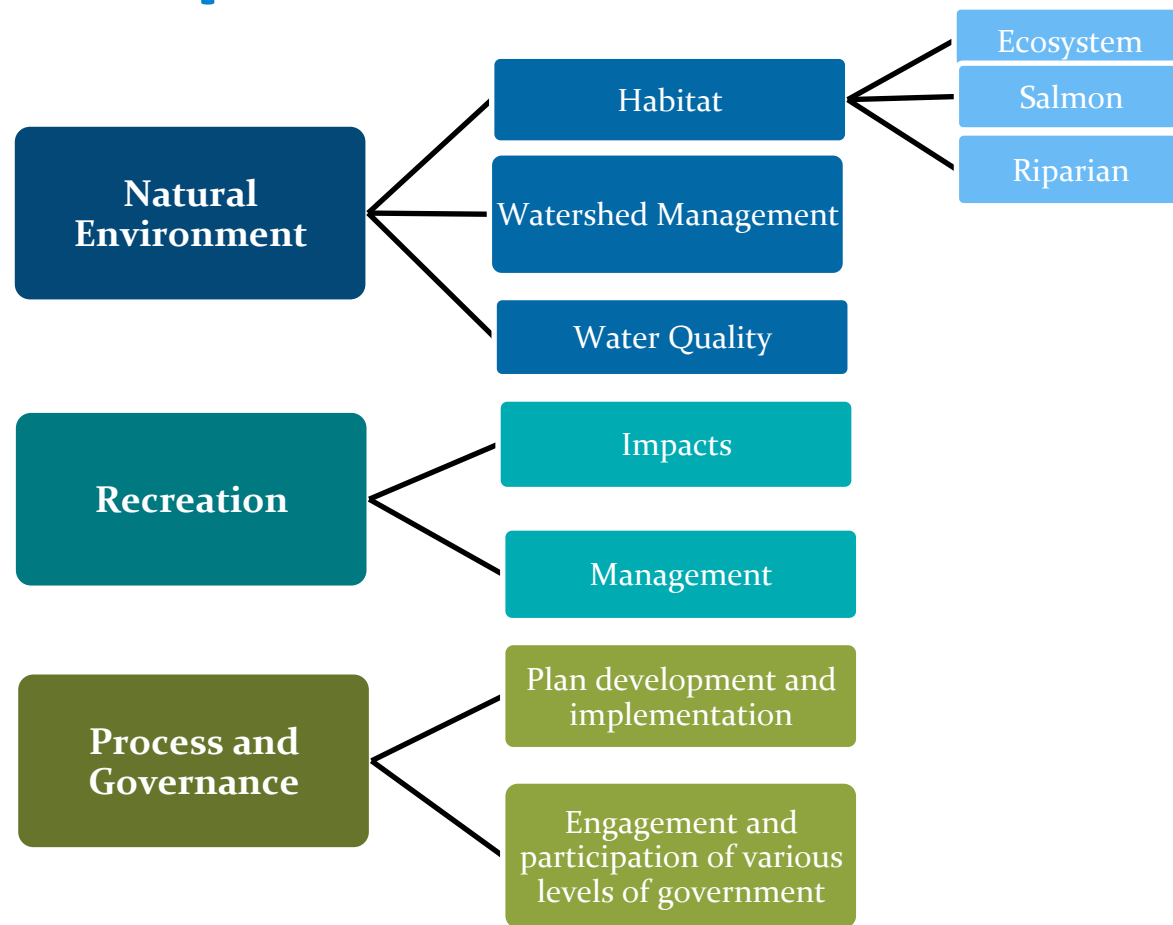
- Phase I – Visioning and Issue Identification
 - Stakeholders and public workshops
 - Technical Assessment
 - Foreshore mapping and inventory –
Lower Shuswap and Mabel Lake



Draft Vision

Working together to sustain a healthy, resilient watershed where ecosystems are protected and restored and environmental and cultural values are respected. Through the management of human activities, impacts on the watershed will be minimized, ensuring that wildlife, habitat and people thrive.

Issue Themes as Emerged from Workshops





Next Steps

Phase II Kick-Off

- Presentation of results
- “Sharing our experiences” – community group presentations
- Development of guiding principles
- Formation of working groups