



Shuswap Lake Integrated Planning Process (SLIPP)

*an example of a regional
watershed planning process*

November 1st, 2011



Concerns raised by the public about pressures on the lakes:

- The fast pace of development
- Recreational use conflicts
- Degradation of water quality

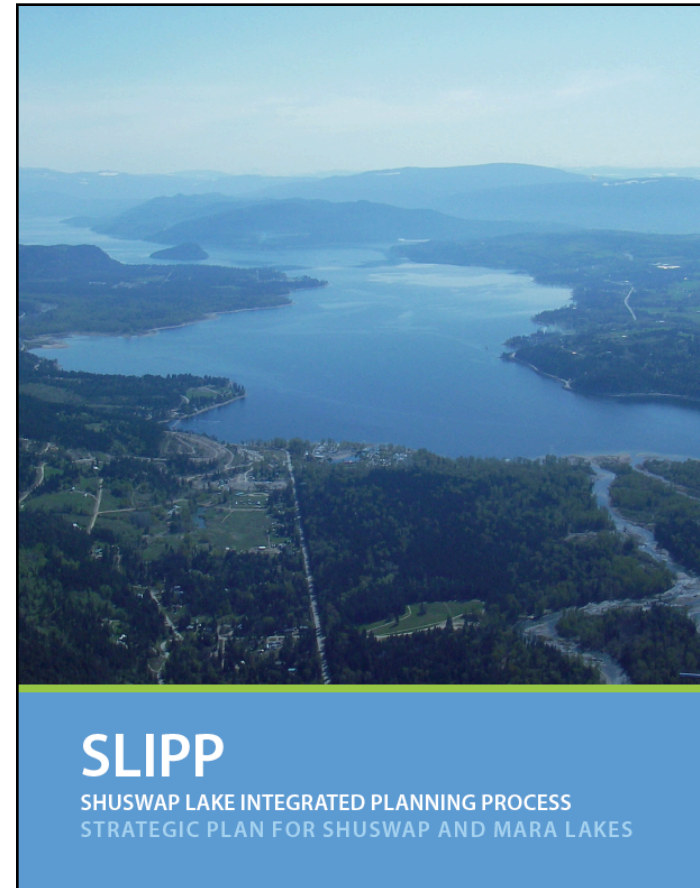
Response complicated by a complex and overlapping government regulatory environment

→ *The quality and integrity of the lakes could be compromised*



What is SLIPP?

- A watershed-wide integrated planning and management initiative:
 - Coordinated planning
 - Innovative projects and research
 - Results-oriented
- Involves all levels of government (First Nations, local/regional, provincial, federal), Shuswap communities and the general public, agencies
- SLIPP developed a foundational sustainable **Strategic Plan** to address key issues
- Plan aims to:
 - Increase public safety on the water
 - Ensure a healthy environment
 - Create economic and recreation opportunities



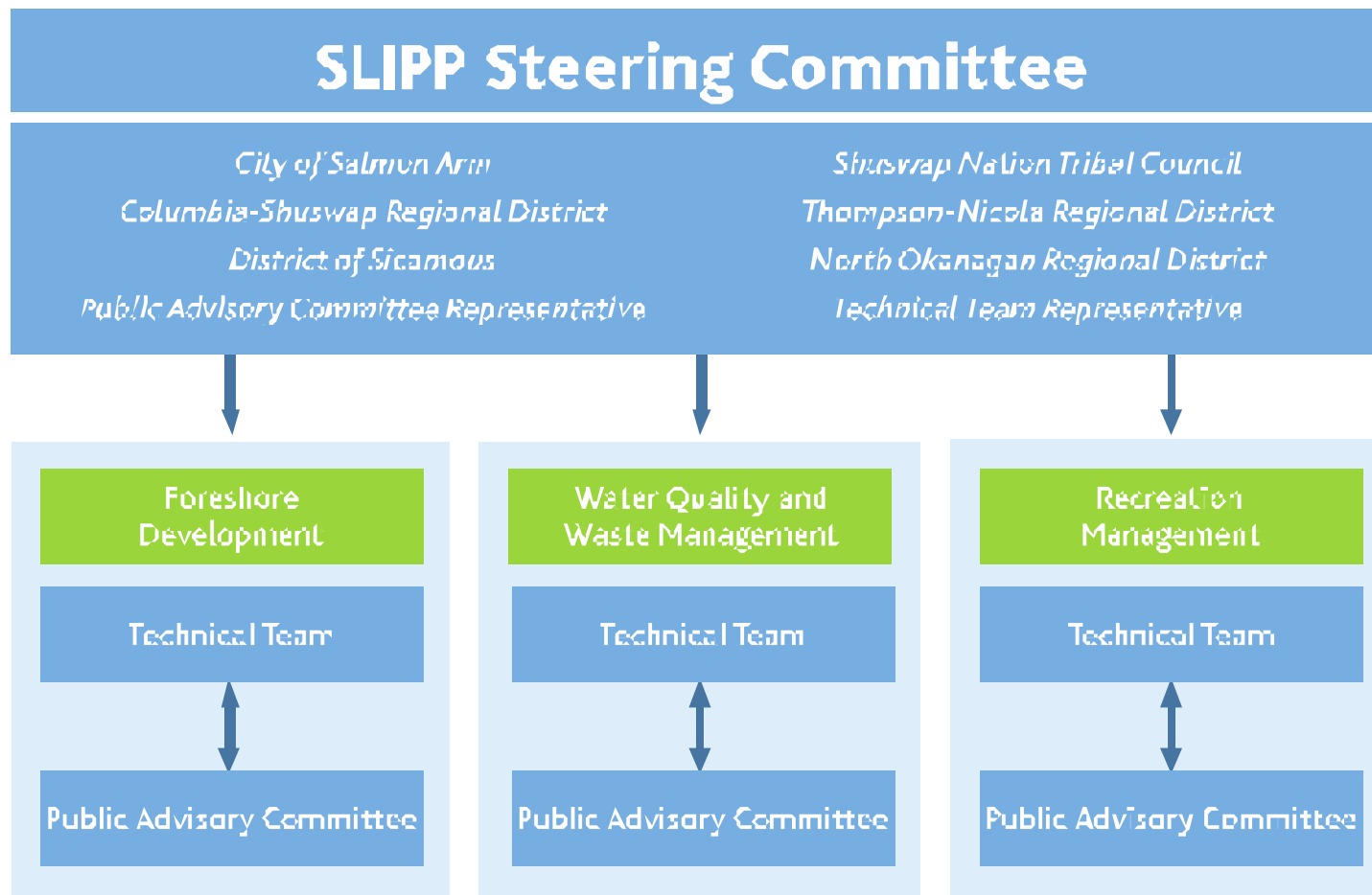
SLIPP has been supported by and received contributions from communities, businesses, stewardship groups, First Nations, and public agencies. The government and First Nations partners are:

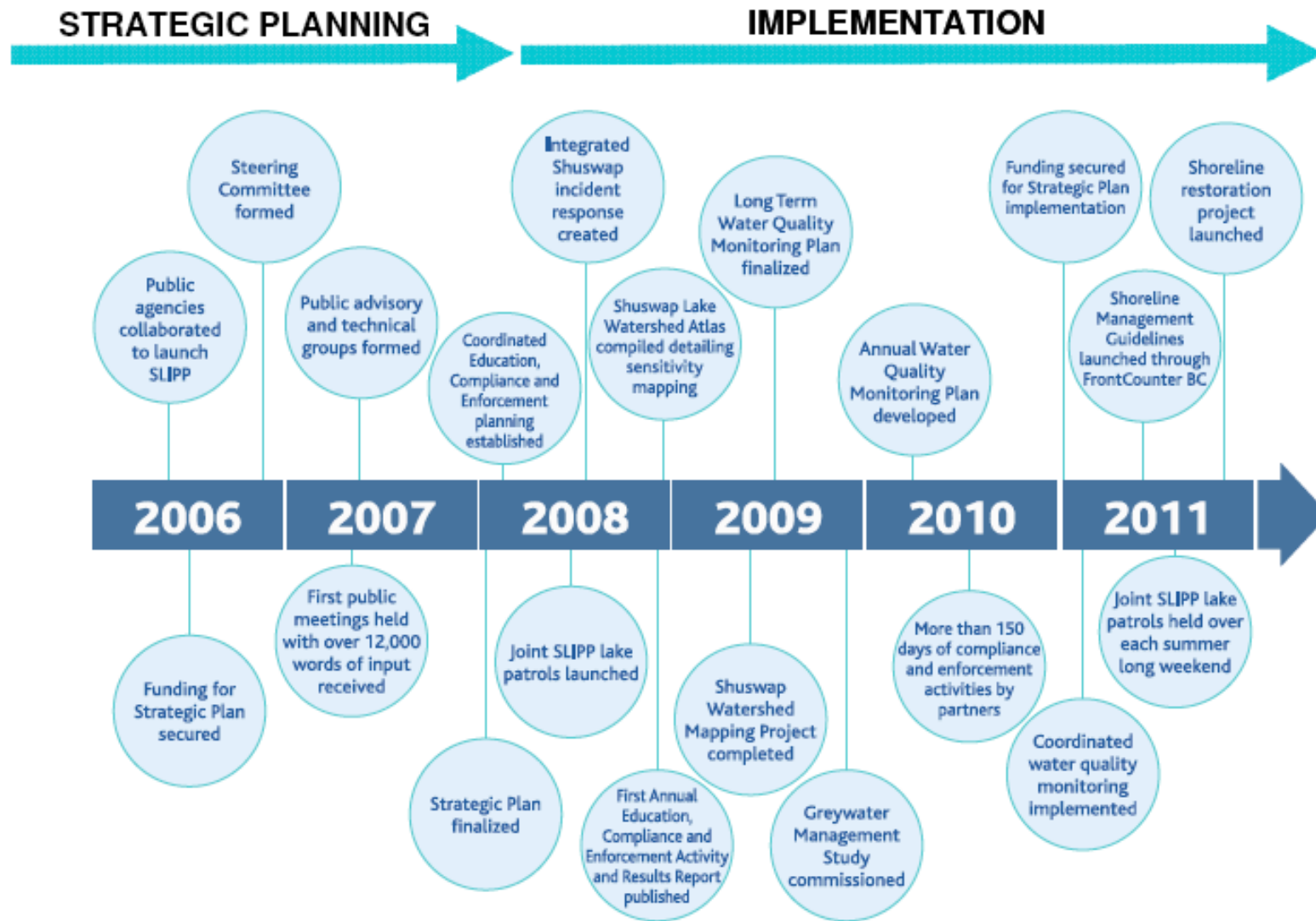
- BC Ministry of Agriculture
- BC Ministry of Environment, including BC Parks and Conservation Officer Service
- BC Ministry of Forests, Lands, and Natural Resource Operations
- Columbia Shuswap Regional District
- City of Salmon Arm
- District of Sicamous
- Fisheries and Oceans Canada
- Fraser Basin Council
- Interior Health Authority
- North Okanagan Regional District
- Royal Canadian Mounted Police
- Shuswap Nation Tribal Council
- Thompson-Nicola Regional District
- Transport Canada

The Strategic Plan contains a **Vision**, three **Goals**, and a series of **Strategies** for the Shuswap watershed:

Vision	Working together to sustain the health and prosperity of the Shuswap and Mara lakes		
Goals	Development that respects the environment, as well as economic and social interests	Water quality that supports public and environmental health	Desirable recreational experiences that are safe and sustainable
Strategies	<ul style="list-style-type: none"> • Create a comprehensive foreshore and upland area site sensitivity map for Shuswap and Mara lakes • Form the Inter-Agency Technical Committee to manage cross-agency development applications and lake issues • Improve the development application review process • Create a model for assessing cumulative impact 	<ul style="list-style-type: none"> • Develop an inter-agency water quality monitoring and reporting program • Eliminate boat discharge on the lakes 	<ul style="list-style-type: none"> • Develop a recreation management plan for the Shuswap and Mara lakes • Develop a recreation use monitoring and reporting program
	<ul style="list-style-type: none"> • Create the Professional and Scientific Advisory Group 	<ul style="list-style-type: none"> • Establish a coordinated annual education, compliance and enforcement planning process 	<ul style="list-style-type: none"> • Create the Shuswap Lake integrated response process • Engage stakeholders in education, compliance and enforcement initiatives

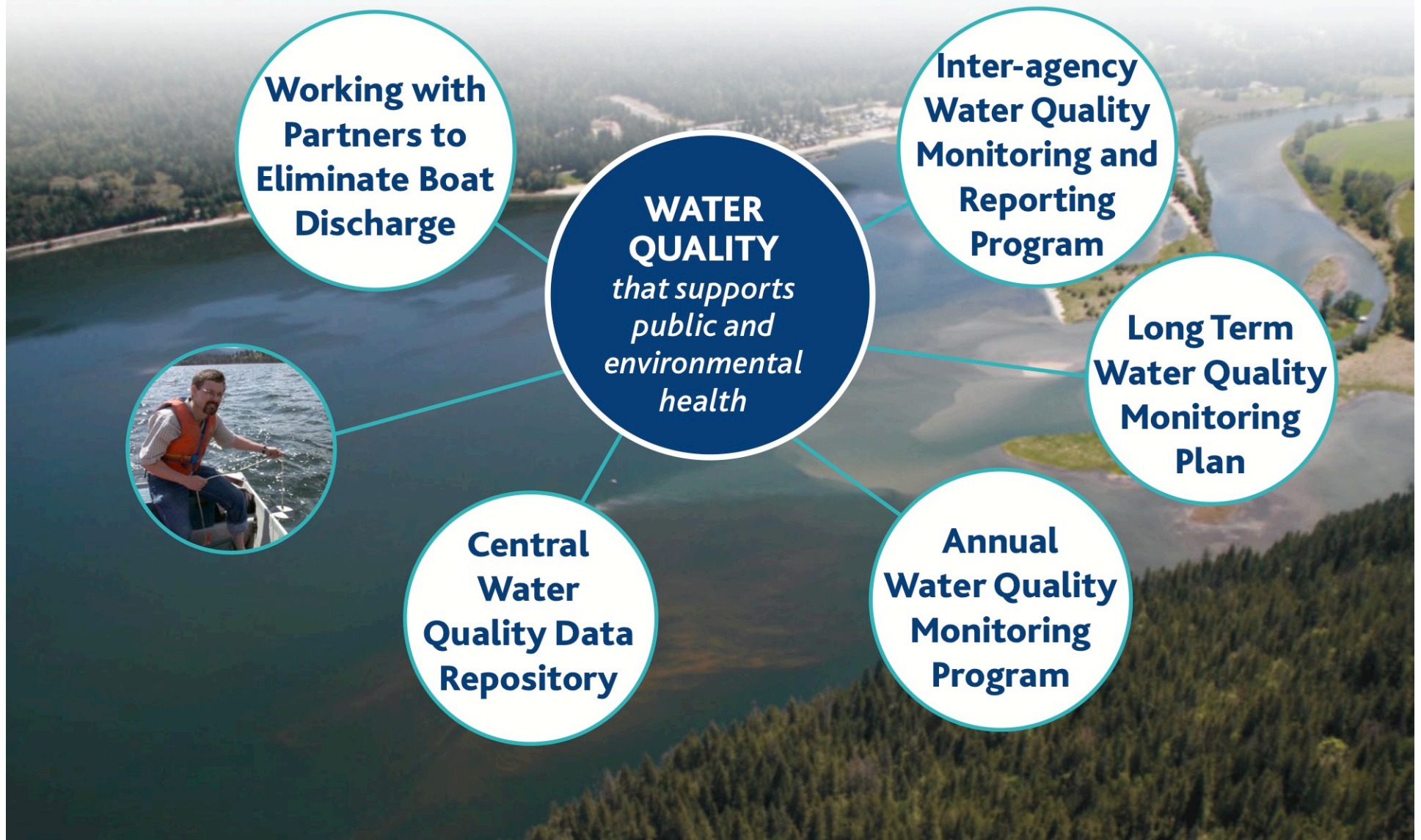
The Strategic Plan also sets the framework for decision-making.
SLIPP complements and enhances existing planning processes and involves a range of stakeholders





- Focus efforts on boating safety, sustainable development, environmental stewardship, and education on key bylaws and regulations
- Initiatives include:
 - www.slippbc.com
 - Town Halls, meetings, workshops
 - Published materials: brochures, newsletters, media releases
 - Joint lake patrols with RCMP and Conservation Officer Service
 - Collaboration with community partners







Visit www.slippbc.com for more information

Email info@slippbc.ca